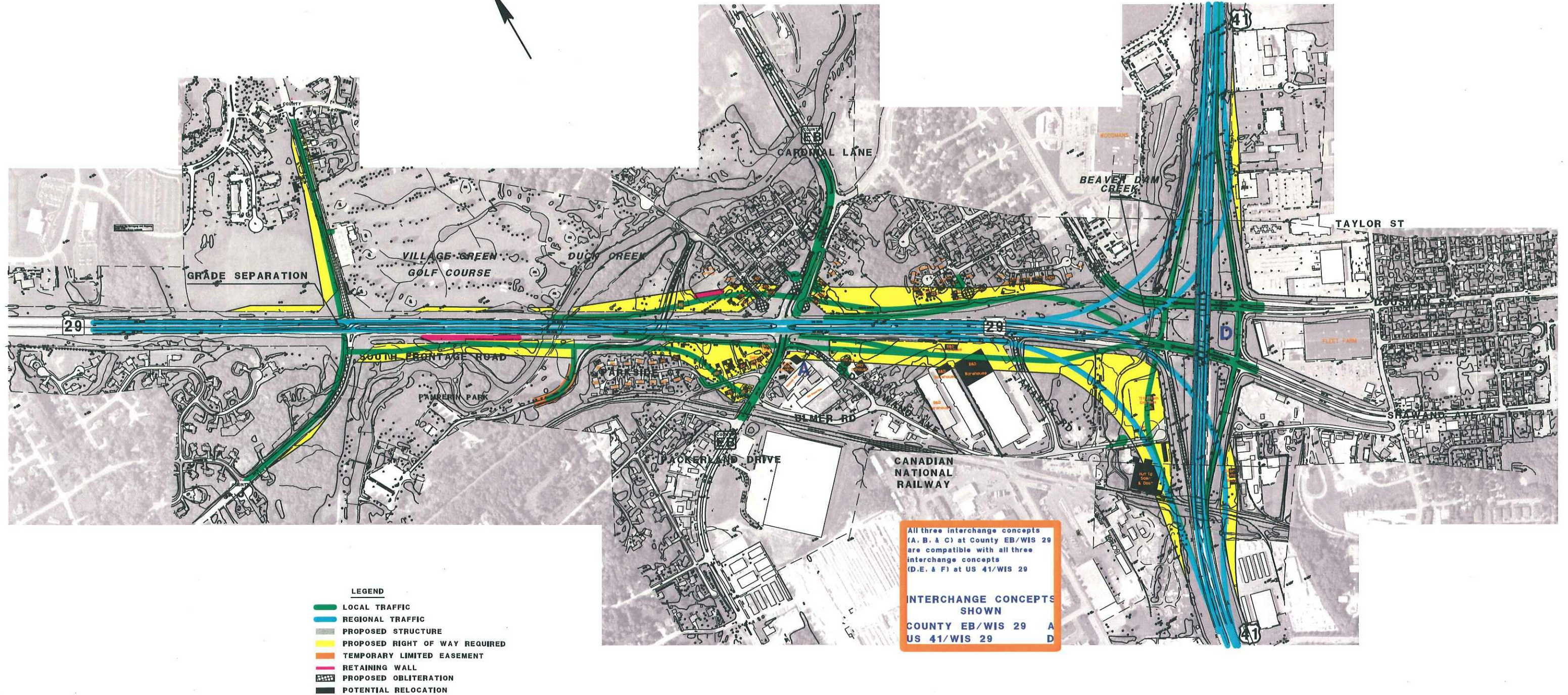
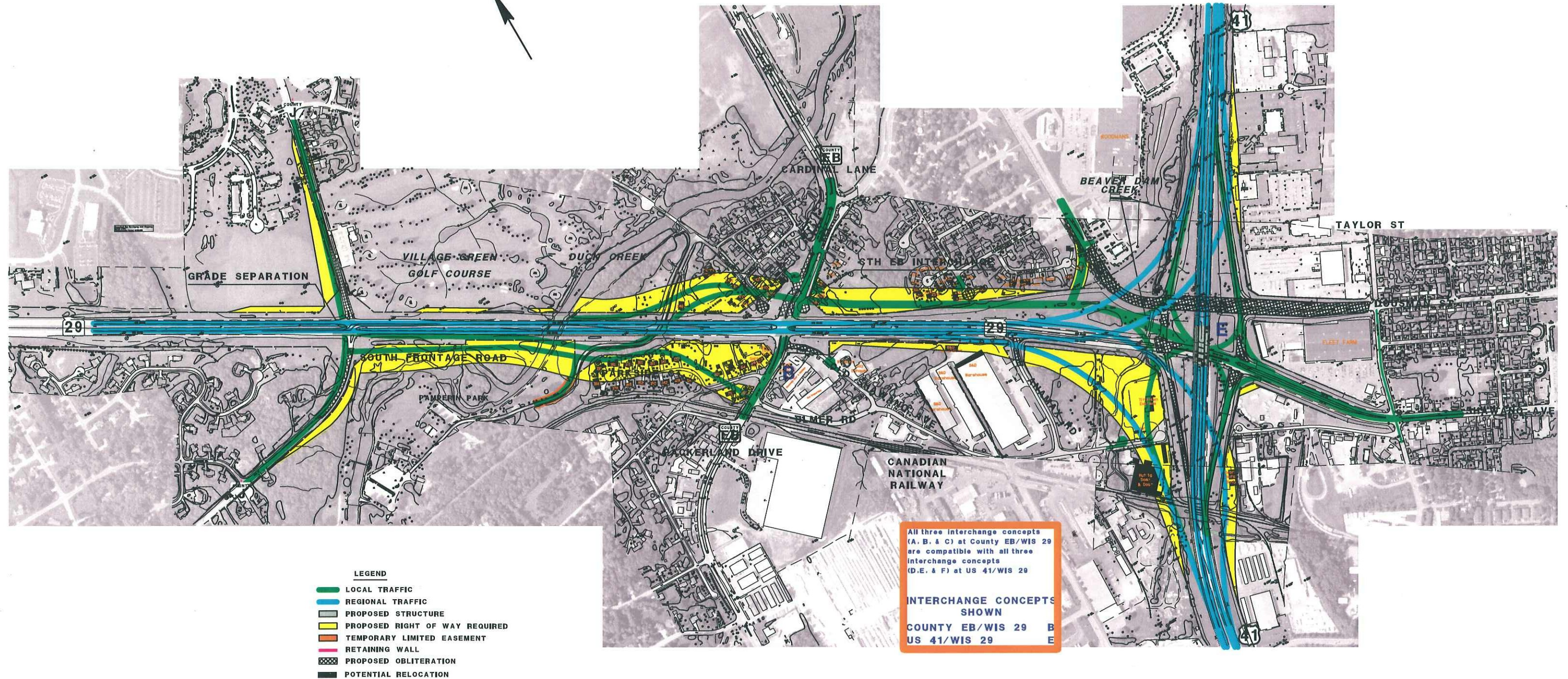


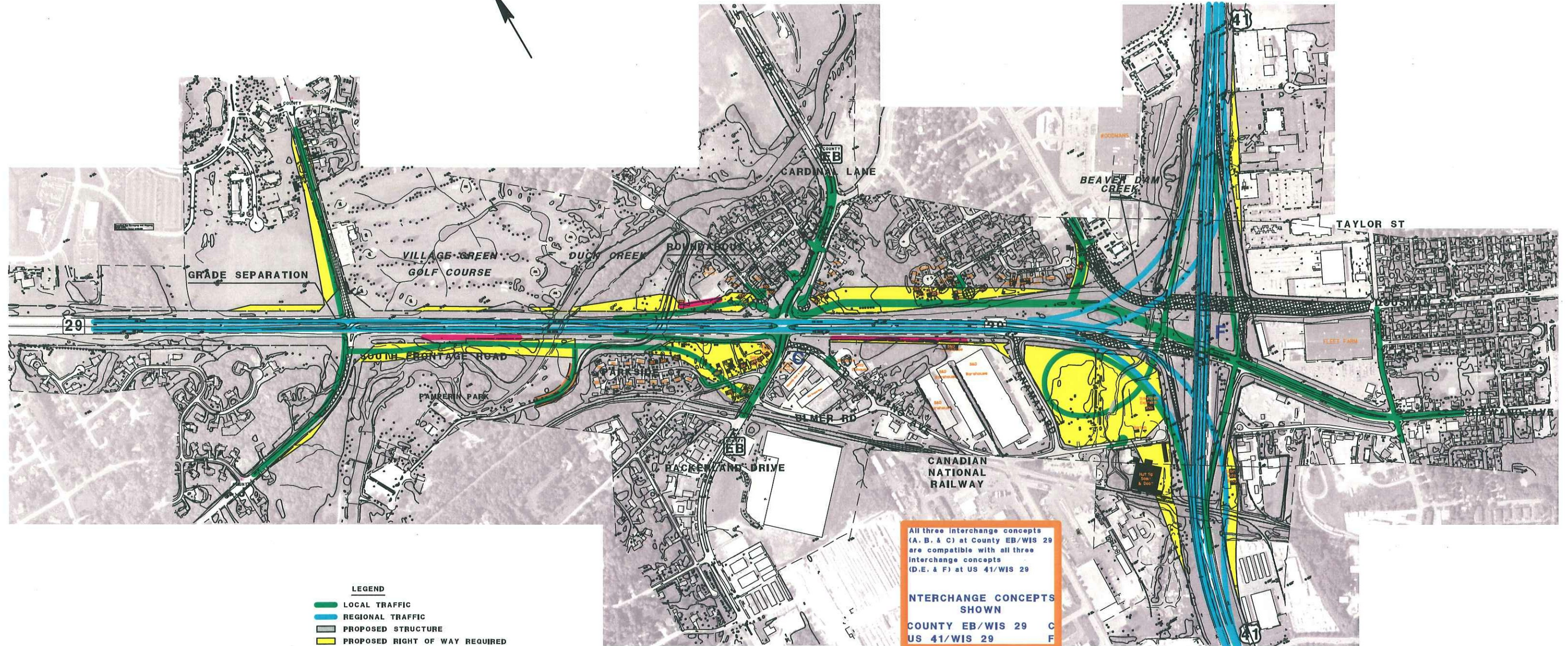
ALTERNATE 1 SPLIT DIAMOND INTERCHANGE AT US 41/WIS 29



ALTERNATE 2 SINGLE POINT URBAN INTERCHANGE AT US 41/WIS 29



ALTERNATE 2A CONVENTIONAL DIAMOND INTERCHANGE AT US 41/WIS 29



- LEGEND**
- LOCAL TRAFFIC
 - REGIONAL TRAFFIC
 - PROPOSED STRUCTURE
 - PROPOSED RIGHT OF WAY REQUIRED
 - TEMPORARY LIMITED EASEMENT
 - RETAINING WALL
 - PROPOSED OBLITERATION
 - POTENTIAL RELOCATION

All three interchange concepts (A, B, & C) at County EB/WIS 29 are compatible with all three interchange concepts (D, E, & F) at US 41/WIS 29

INTERCHANGE CONCEPTS SHOWN

COUNTY EB/WIS 29	C
US 41/WIS 29	F